

virtual

**pu  
sh.**

[ physical theatre ]



PUSH Physical Theatre's  
TRUNK SHOW

# PUSH Physical Theatre's TRUNK SHOW

*As you know, all the members of award-winning PUSH Physical Theatre live together in a small travel trunk...*

Their stage manager folds them carefully inside after each performance and sits on the lid until the next show. They've been in there for a while now and it's time for a break-out...

Created especially for the small screen, witness original stories, funny, intimate, heart-breaking and universal, caught and released into the world with PUSH's signature athleticism and no-holds-barred physicality.

Topics include creative problem solving, conflict resolution and healthy relationships, racism, how to have 'fearless conversations' and much more.

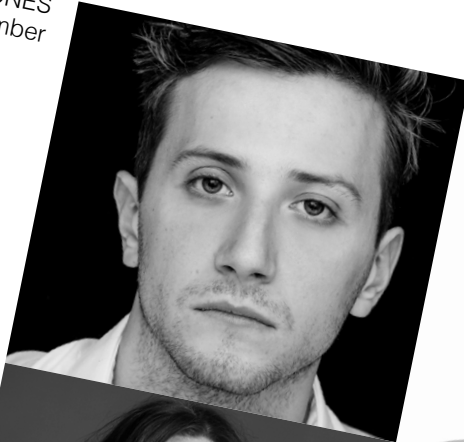


CREATIVE  
TEAM



DARREN STEVENSON  
co-artistic director

ASHLEY JONES  
company member



SYDNEY BURROWS  
company member



HEATHER STEVENSON  
co-artistic director



HASSIEM MUHAMMAD  
guest artist



**ROBIN KLINGER** entertainment

## BOOKING INFO

bus: (516) 472-7130 • cell: (516) 318-5405

[robin@robinklingerentertainment.com](mailto:robin@robinklingerentertainment.com)

[robinklingerentertainment.com/submit-interest](http://robinklingerentertainment.com/submit-interest)

# TRUNK SHOW

## P R O P O S A L

### Presenters Receive:

- Five 20-minute segments (100 mins total) licensed for three consecutive weeks of your choosing (available Dec 2020 – June 2022)
- PDF downloadable study guide
- Additional Training content for students to access anytime.  
(Appropriate for grades 6-12)

### Segment #1 “All By Myself”

1. Founding Directors, Darren and Heather Stevenson, introduce physical theatre
2. Performance - BALLOON MAN (08:44)
3. Darren shares how to solve problems creatively.
4. Performance - SYDNEY IN A TREE (05:30)
  - *Additional Content (free access for students):*
    - <https://youtu.be/o3bu3jhdzEE> Helps students begin creating with nothing more than a chair.
    - <https://youtu.be/1aGMOUFlxu4> Principles of illusion.

### Segment #2 “Relationships”

1. Darren and Heather discuss how to resolve conflicts and keep friendships healthy.
2. Performance - PLANTED (7:00) A tiny living space strains this relationship.
3. Performance – JOURNEY (8:00) Lost at sea with an unlikely boat and a philharmonic orchestra.
  - *Additional Content (free access for students):*
    - <https://youtu.be/AzIVhTUQX-k> How to begin generating movement with a friend.

### Segment #3 “Fearless Conversations”

1. Darren talks about how to have difficult but important conversations about racism.
2. Performance – RACE (17:00)
  - *Additional Content (free access for students):*
    - <https://youtu.be/jLd61CkBhhk> and <https://youtu.be/phIL5v8e8aI> Helps students create the movement they saw in “RACE”

### Segment #4 “Movement Masterclass”

A fast-paced workshop designed to get students thinking and moving.

### Segment #5 “Q&A with the artists”

PUSH performers answer your questions.

### Pricing:

\$3,500 all content, three-week license for educators and students

\$4,000 all content, three-week license for educators, students, and public

---

### Video Links:

1. Introducing PUSH (3:05): <https://youtu.be/HJ6bRx0kbgI>
2. Trailer for THE TRUNK SHOW (1:21): <https://youtu.be/a5cf2IbD680>
3. Free Training Videos: <https://bit.ly/32rdbBg>

### THE TRUNK SHOW digital performance REVIEWS and DOCUMENTARY:

1. PBS with “Arts in Focus” documentary short (4:13): <https://youtu.be/2PiAGTnc84g>
2. “...a particularly powerful piece that sends chills even through a digital medium.” - full WXXI review: <https://bit.ly/3eEBNeo>
3. “...MARVELOUS...DYNAMIC...” - full CITY Newspaper review: <https://bit.ly/3paHNjU>



PRODUCTION PHOTOS FROM THE PERFORMANCE

